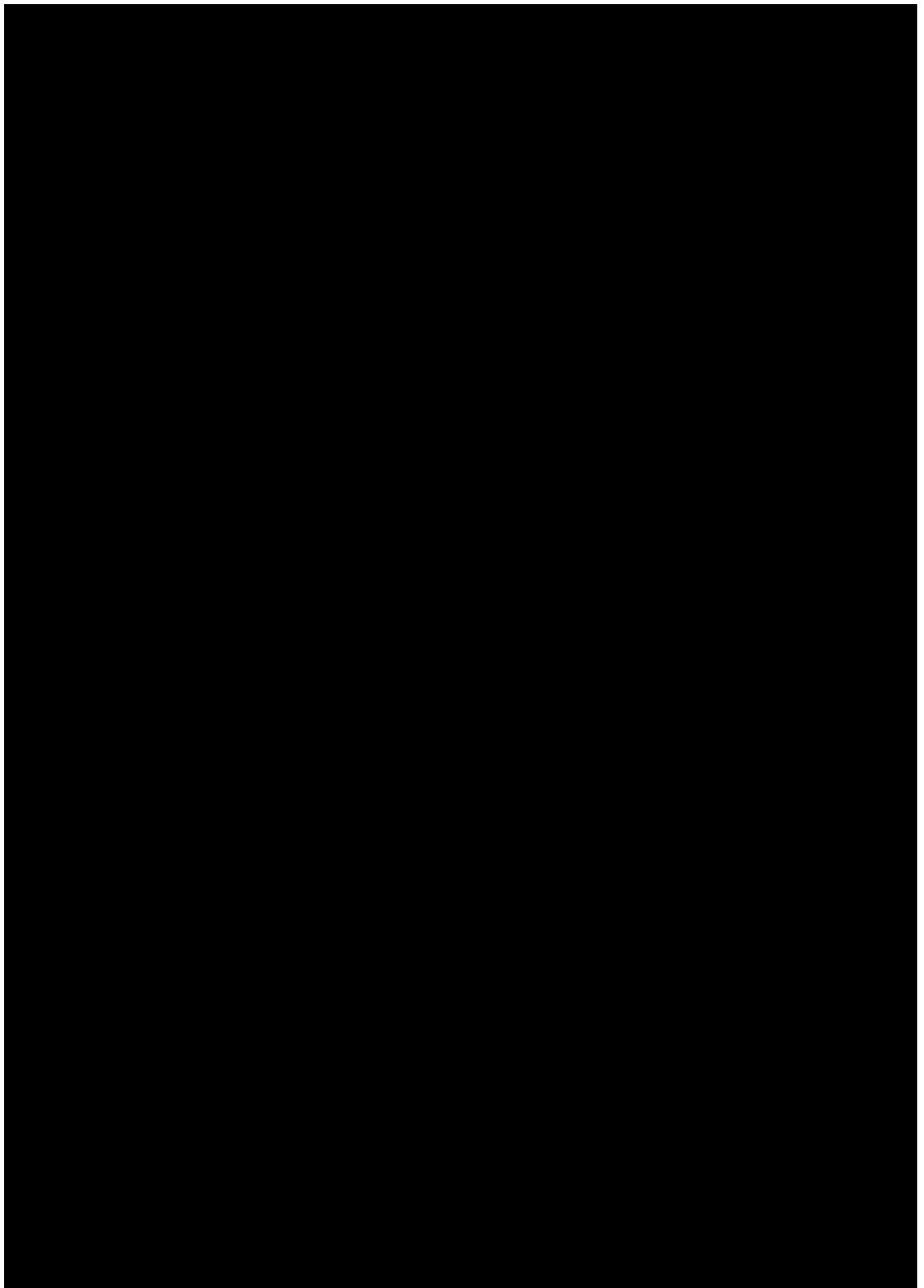

แผนการบริหารการจัดการภาวะฉุกเฉินและภาวะวิกฤต

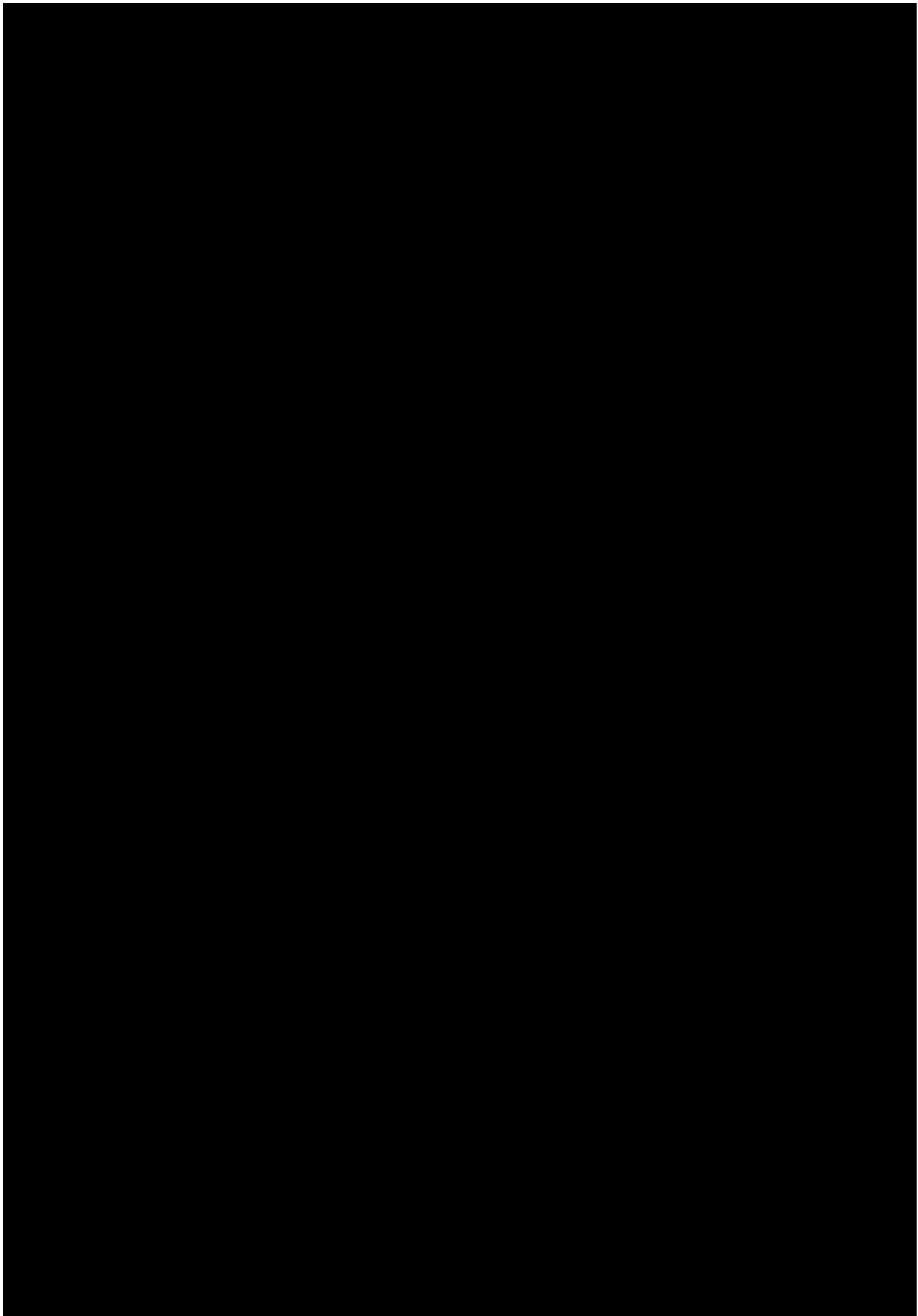


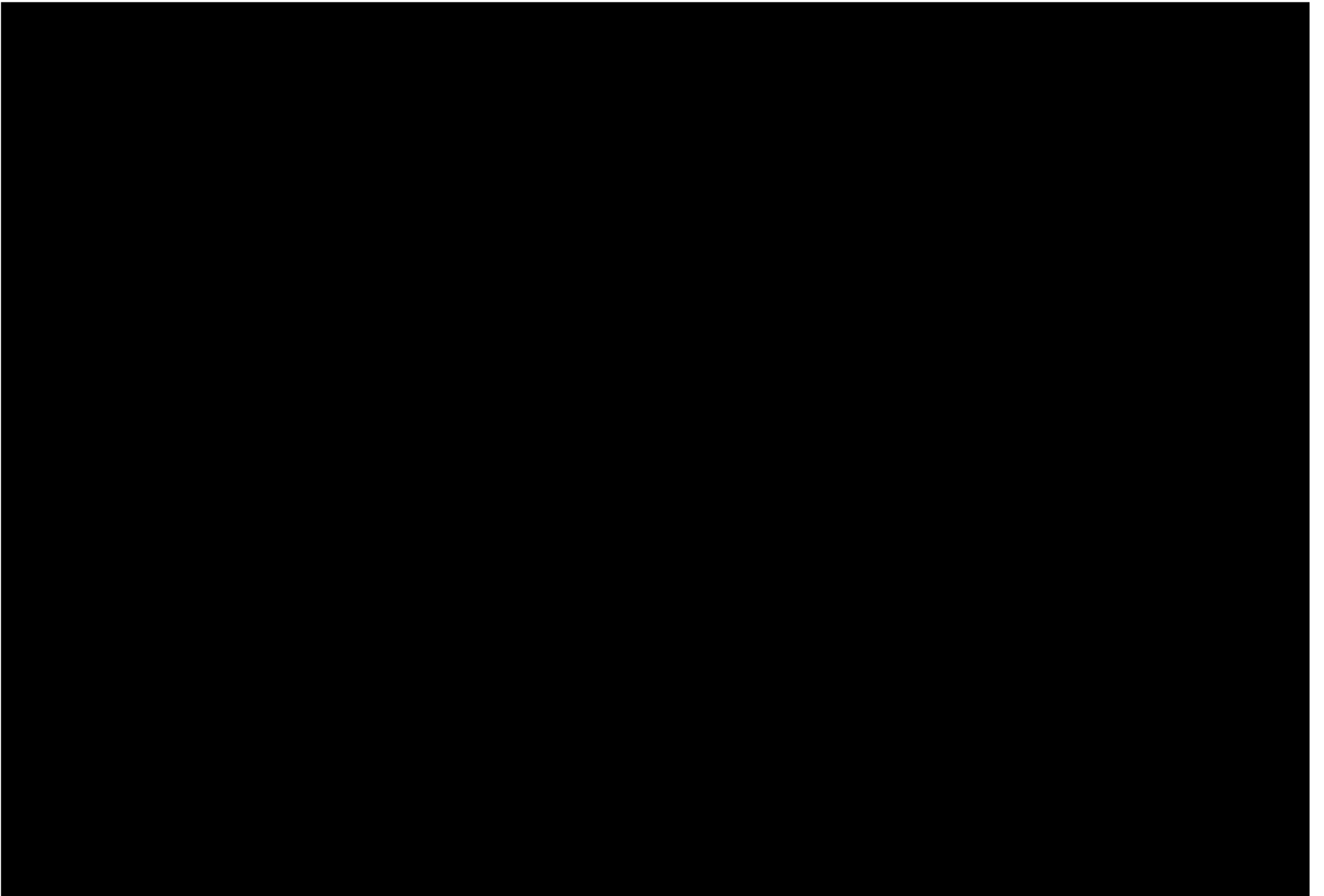
บริษัท พีทีที โกลบอล เคมิคอล จำกัด (มหาชน)



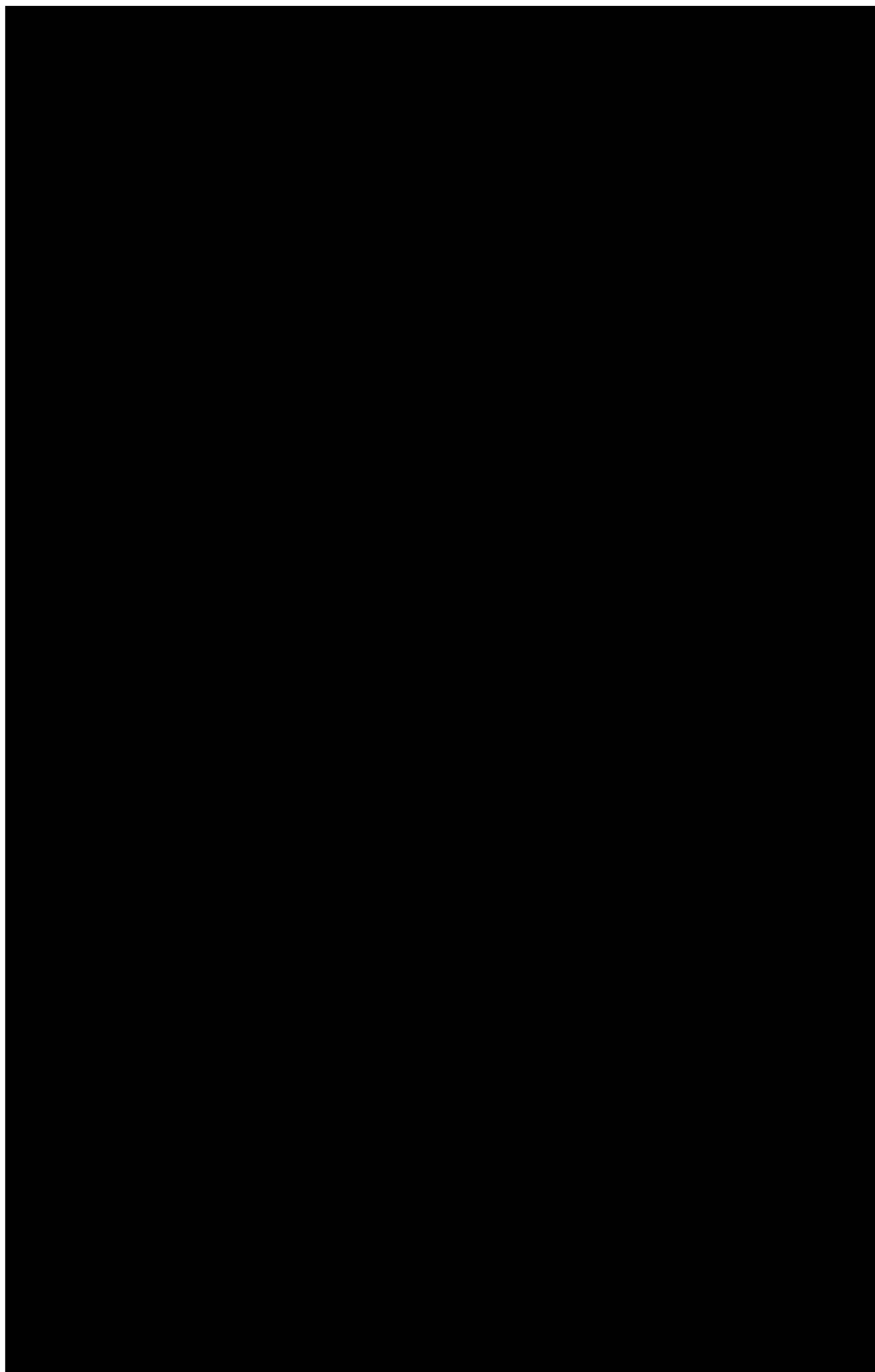
ประกาศใช้ครั้งที่ 0

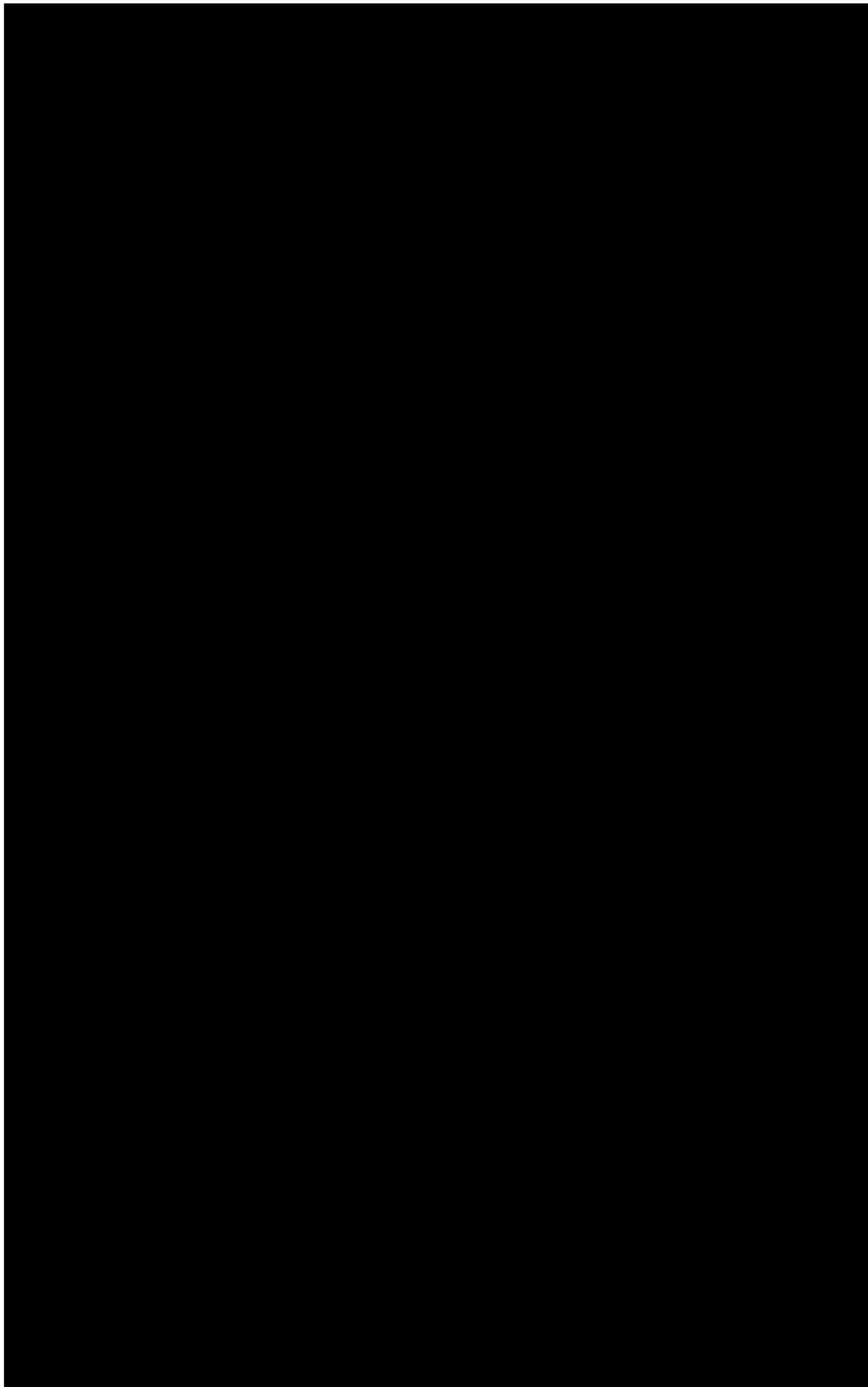
วันที่มีผลบังคับใช้ : 25/02/2020





[The following text is a dense, continuous block of text, likely a scan of a document page. It appears to be a mix of English and possibly some non-English characters, but the overall structure suggests a single paragraph or a series of closely related sentences. Due to the low resolution and potential noise in the scan, the specific words and punctuation are difficult to discern accurately. The text is oriented vertically on the page.]

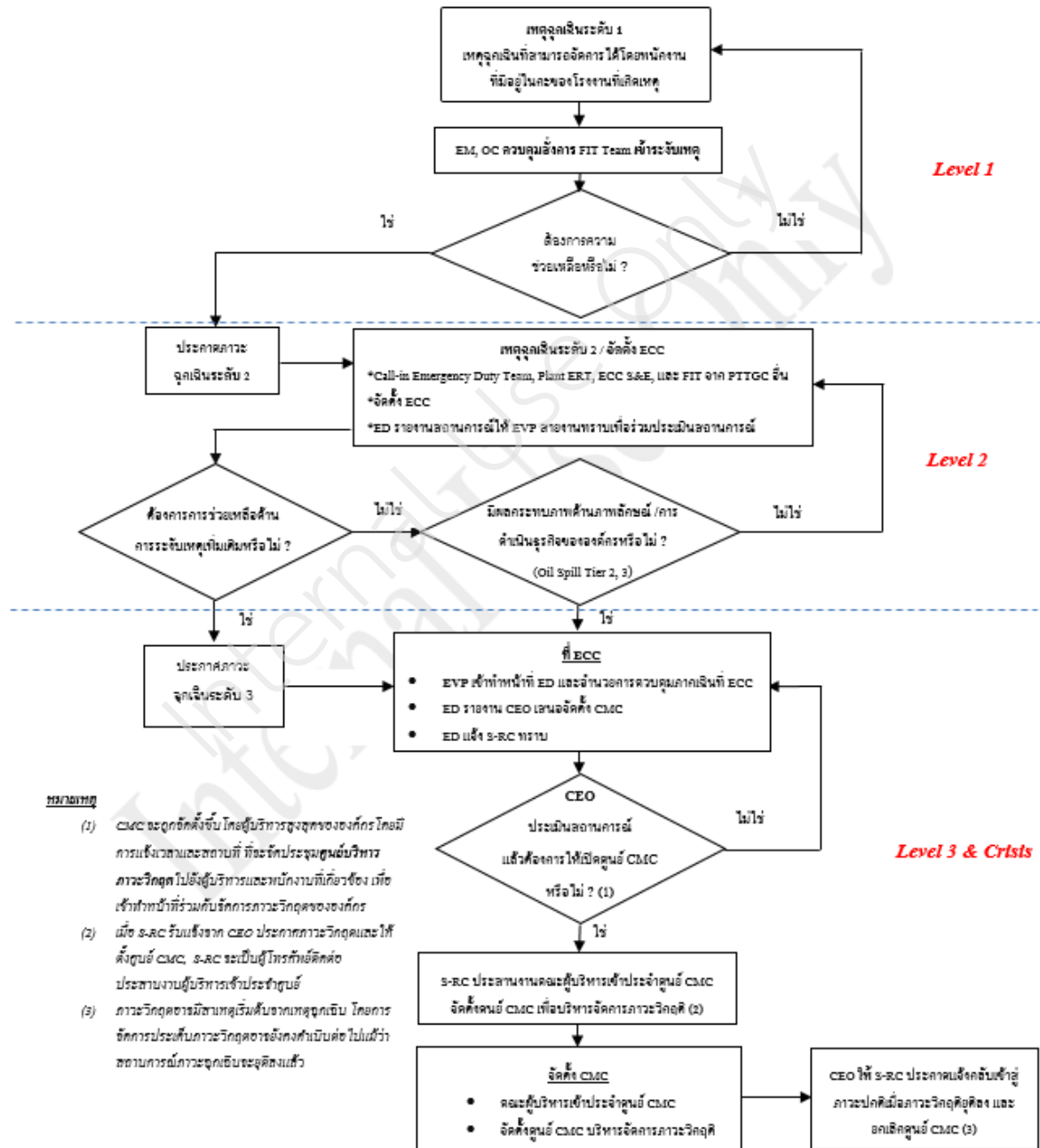


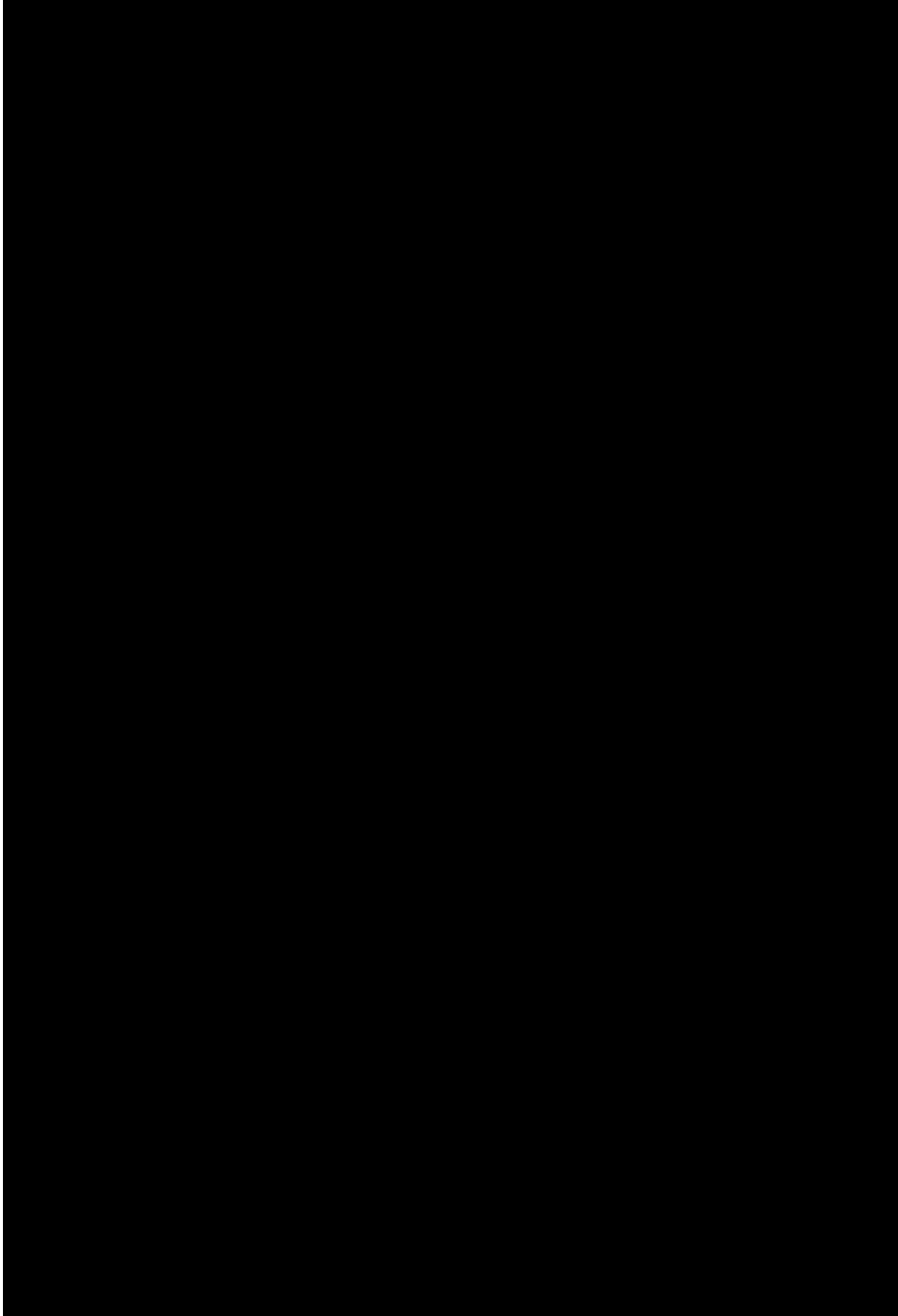


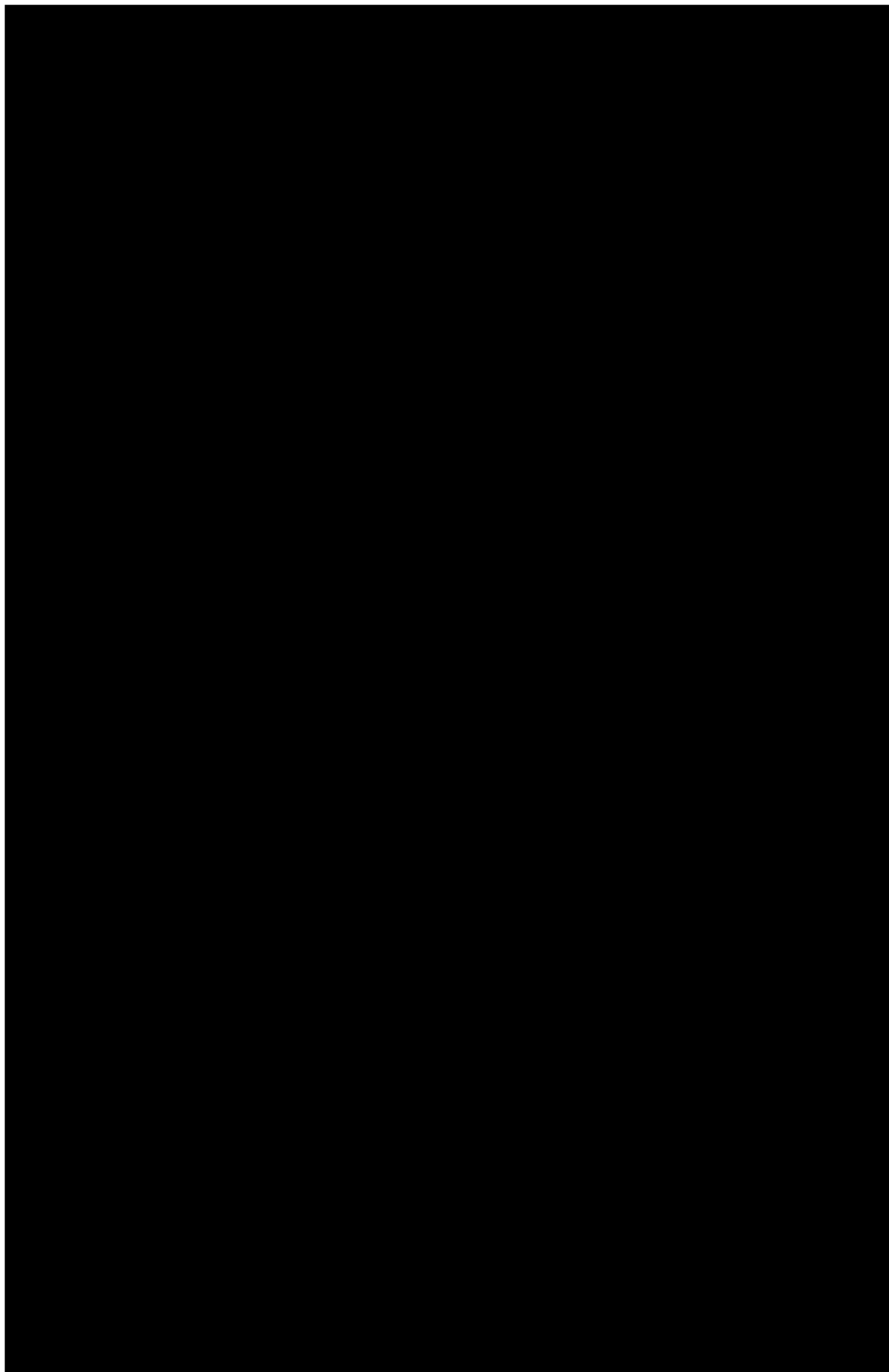
[The following text is a dense, continuous block of text, likely a page of a document, which has been completely redacted with a large black rectangle. The text is illegible due to the redaction.]

4. WORKFLOW

Flow Chart Emergency & Crisis Plan / การปรับระดับภาวะฉุกเฉินเข้าสู่ภาวะวิกฤต







[REDACTED]

[REDACTED]

[The following text is a dense, continuous block of illegible characters and symbols, likely representing a corrupted or redacted document. It contains no discernible words or structure.]

[The following text is a dense, continuous block of illegible characters and symbols, likely representing a corrupted or redacted document. It contains no discernible words or structure.]

